

Tufão nas Filipinas - de Setembro 2025

Quase um milhão de pessoas evacuadas enquanto as Filipinas se preparam para o tufão Fung-wong

Veja fotos da destruição após tufão que deixou 114 mortos nas Filipinas | CNN Brasil

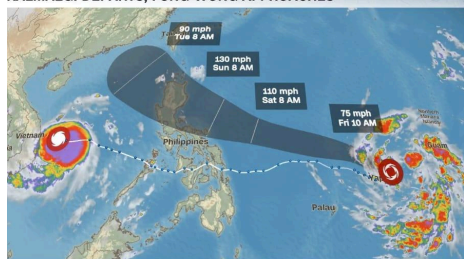
<https://news.un.org/pt/story/2025/11/1851479>



PAGASA, according to Reuters.

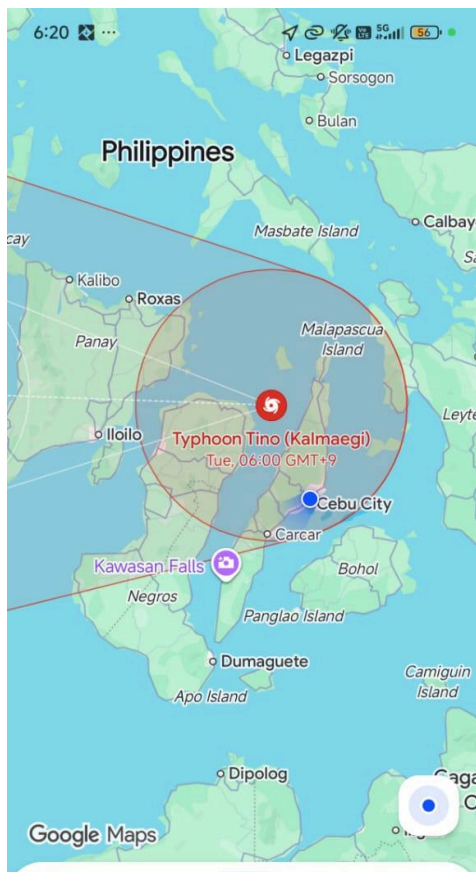
“It can cover almost the entire country,” Estareja said.

KALMAEGI DEPARTS, FUNG-WONG APPROACHES



(CNN Weather)

On Saturday morning, Fung-wong barreled across the Philippine Sea with sustained winds of 140 kph (87 mph) and gusts up to 170 kph (106 mph).



Typhoon Tino (Kalmaegi)

Philippine Sea



Typhoon Tino (Kalmaegi)

Philippine Sea

FALTA DE ENERGIA DAS 22:00 ÀS 11:00 DO DIA SEGUINTE



